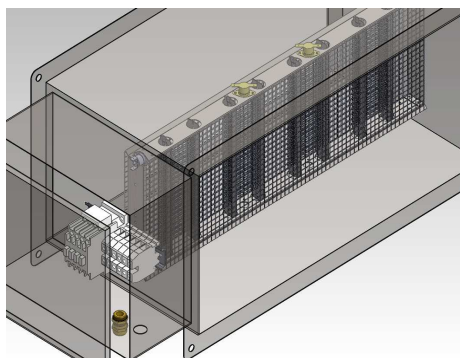




## RE-TCFE-SCT HEATERS SERIES



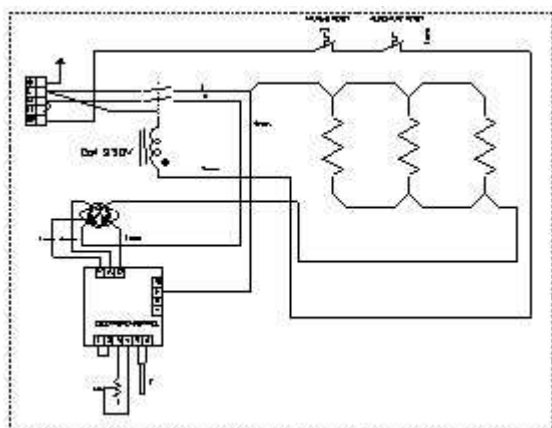
This range consists of wire heater mounted in galvanvanized steel rectangular duct and complete with:

- Automatic reset thermal protection;
- Manual reset thermal protection;
- Contactor;
- Terminal block;
- Output electronic temperature control;
- Cable clamp.

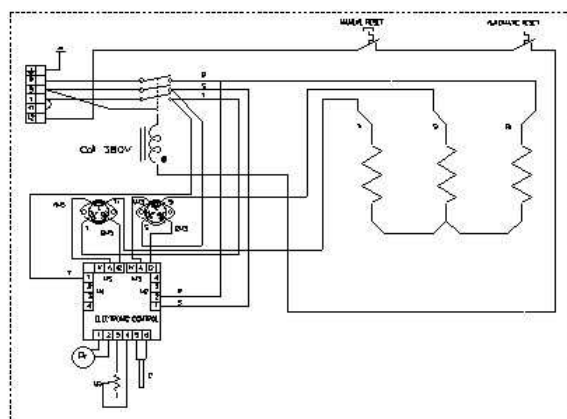
The electronic temperature control is achieved by an electronic board with TRIAC mounted inside the junction box.

The outlet temperature is continuously controlled by a probe placed inside the channel and is adjustable by a potentiometer, a plate "0-30°C" enables set the outgoing  $\Delta t$ .

The heater has an auxiliary contact that allows remote control with a free contact resulting from an external switch or a room thermostat.



**SINGLE PHASE**



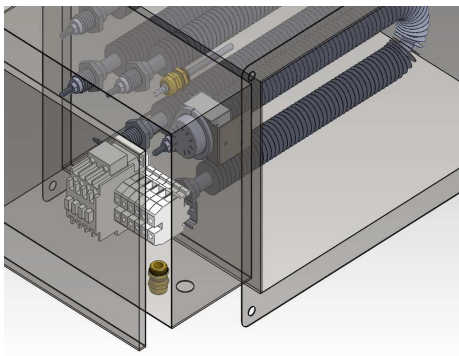
**THREE PHASES**

The following table shows heaters that are available in stock; for different power or size please contact our technical department.

<b>RECTANGULAR DUCT WITH RE-TCFE-SCT WIRE HEATERS</b>				
<b>Code</b>	<b>Dimension (mm)</b>	<b>Power (W)</b>	<b>Voltage (V)</b>	<b>Note</b>
RE-TCFE-SCT35020-M	350x250x400	2000	230-1	
RE-TCFE-SCT35030-M	350x250x400	3000	230-1	
RE-TCFE-SCT35040-M	350x250x400	4000	230-1	
RE-TCFE-SCT35030-T	350x250x400	3000	400-3	
RE-TCFE-SCT35060-T	350x250x400	6000	400-3	
RE-TCFE-SCT40026-M	400x300x400	2600	230-1	
RE-TCFE-SCT40040-M	400x300x400	4000	230-1	
RE-TCFE-SCT40040-T	400x300x400	4000	400-3	
RE-TCFE-SCT40080-T	400x300x400	8000	400-3	
RE-TCFE-SCT45030-M	450x300x400	3000	230-1	
RE-TCFE-SCT45045-M	450x300x400	4500	230-1	
RE-TCFE-SCT45045-T	450x300x400	4500	400-3	
RE-TCFE-SCT45090-T	450x300x400	9000	400-3	



## RE-TCCE-SCT HEATERS SERIES



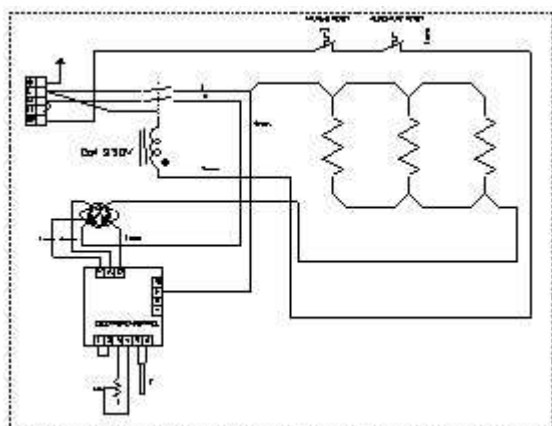
This range consists of stainless steel finned heating elements mounted in galvanized steel rectangular duct and complete with:

- Automatic reset thermal protection;
- Manual reset thermal protection;
- Contactor;
- Terminal block;
- Output electronic temperature control;
- Cable clamp.

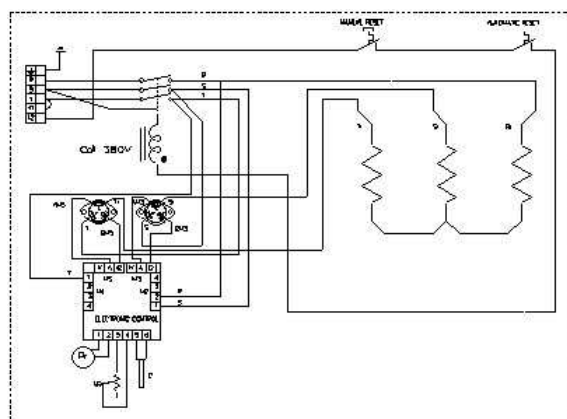
The electronic temperature control is achieved by an electronic board with TRIAC mounted inside the junction box.

The outlet temperature is continuously controlled by a probe placed inside the channel and is adjustable by a potentiometer, a plate "0-30°C" enables set the outgoing  $\Delta t$ .

The heater has an auxiliary contact that allows remote control with a free contact resulting from an external switch or a room thermostat.



**SINGLE PHASE**



**THREE PHASES**

The following table shows heaters that are available in stock; for different power or size please contact our technical department.

<b>RECTANGULAR DUCT WITH RE-TCCE-SCT INOX FINNED HEATING ELEMENTS HEATERS</b>				
<b>Code</b>	<b>Dimension (mm)</b>	<b>Power (W)</b>	<b>Voltage (V)</b>	<b>Note</b>
RE-TCCE-SCT35020-M	350x250x400	2000	230-1	
RE-TCCE-SCT35030-M	350x250x400	3000	230-1	
RE-TCCE-SCT35040-M	350x250x400	4000	230-1	
RE-TCCE-SCT35030-T	350x250x400	3000	400-3	
RE-TCCE-SCT35060-T	350x250x400	6000	400-3	
RE-TCCE-SCT40025-M	400x300x400	2600	230-1	
RE-TCCE-SCT40040-M	400x300x400	4000	230-1	
RE-TCCE-SCT40040-T	400x300x400	4000	400-3	
RE-TCCE-SCT40080-T	400x300x400	8000	400-3	
RE-TCCE-SCT45030-M	450x300x400	3000	230-1	
RE-TCCE-SCT45045-M	450x300x400	4500	230-1	
RE-TCCE-SCT45045-T	450x300x400	4500	400-3	
RE-TCCE-SCT45090-T	450x300x400	9000	400-3	