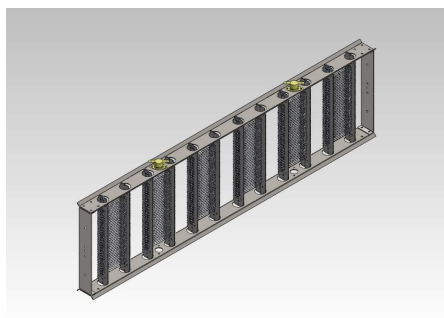




## RE-MOS HEATERS SERIES

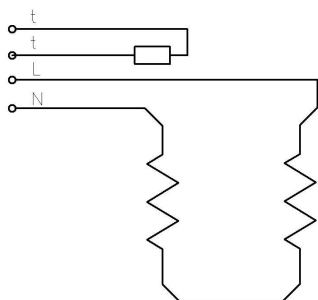


Electric wire heater for duct insertion mounted on galvanized steel frame and complete with:

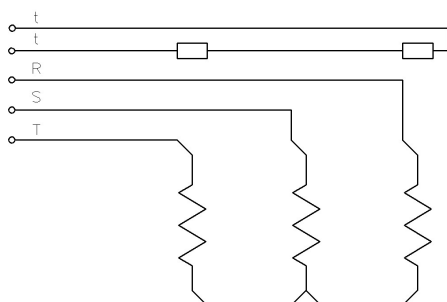
- Automatic thermal protection;
- Manual thermal protection;
- Protection grid on both sides;
- Supply cable (1m).

This heaters are equipped with automatic and manual reset thermal protection, calibrated for intervening in case of no or poor ventilation.

The frame is provided with drilled shoulders that simplify fixing operation.



**SINGLE PHASE**



**THREE PHASES**



The following table shows heaters that are available in stock; for different power or sizes request please contact our technical department.

<b>RE-MOS WIRE HEATERS SERIES</b>				
<b>Code</b>	<b>Dimension (mm)</b>	<b>Power (W)</b>	<b>Voltage (V)</b>	<b>Note</b>
RE-MOS	300x240/270x45	2000	230-1	
RE-MOS	400x240/270x45	3000	230-1	
RE-MOS	500x240/270x45	4000	230-1	
RE-MOS	600x240/270x45	4500	230-1	
RE-MOS	300x240/270x45	3000	400-3	
RE-MOS	400x240/270x45	4500	400-3	
RE-MOS	500x240/270x45	6000	400-3	
RE-MOS	600x240/270x45	8000	400-3	