

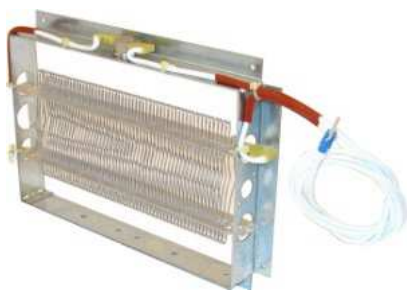
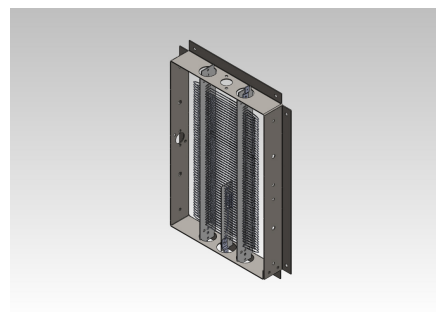


## RE-MCT HEATER SERIES

Wire electric heater mounted on standard size galvanized steel frame and complete with:

- Automatic reset thermal protection;
- Protection grid on both sides (on request);
- Supply cable (1m).

This heaters are equipped with automatic reset thermal protection, calibrated for intervening in case of no or poor ventilation.

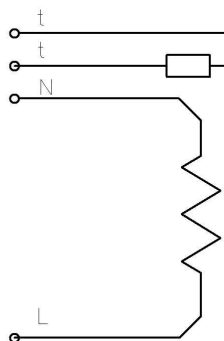


In the **RE-MCT-FL** code the frame is equipped with a flange on all sides that allows easy mounting on flat surfaces.

Alternatelively, there's the **S-200** model. More compact than previous, suitable for use on fan.



## SINGLE PHASE



The following table shows heaters that are available in stock; for different power or size please contact our technical department.

<b>RE-MCT WIRE HEATERS SERIES</b>				
<b>Code</b>	<b>Dimension (mm)</b>	<b>Power (W)</b>	<b>Voltage (V)</b>	<b>Note</b>
RE-MCT	153x230/270x35	500	230-1	
RE-MCT	153x230/270x35	1000	230-1	
RE-MCT	153x230/270x35	1500	230-1	
RE-MCT	153x230/270x35	2000	230-1	
RE-MCT	153x230/270x35	2500	230-1	
RE-MCT	153x230/270x35	3000	230-1	
RE-MCT-FL	153/185x230/270x35	500	230-1	
RE-MCT-FL	153/185x230/270x35	1000	230-1	
RE-MCT-FL	153/185x230/270x35	1500	230-1	
RE-MCT-FL	153/185x230/270x35	2000	230-1	
RE-MCT-FL	153/185x230/270x35	2500	230-1	
RE-MCT-FL	153/185x230/270x35	3000	230-1	
RE-MCT	153x176/220x35	1000	230-1	
RE-MCT	153x176/220x35	1500	230-1	
RE-MCT	153x176/220x35	2000	230-1	
S-200	200x40/45x35	2x375	230-1	
S-200	200x40/45x35	2x500	230-1	
S-200	200x40/45x35	2x1000	230-1	